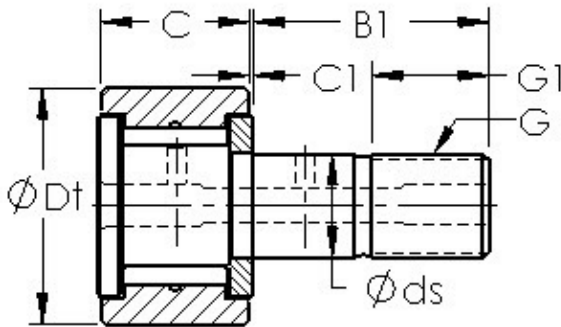




Shandong Chik Bearing Co., Ltd.



AST CF30 needle roller bearings

Bearing No. CF30

Bearing Type	Full Complement
Dynamic Load Rating (Cr)	5,700
Static Load Rating (Cor)	10,600
Max Speed (Grease) (X1000 RPM)	2,700
Tire Outer Dia. (Dt)	1.875
Stud Dia. (ds)	0.750
Tire Width (C)	1.000
Tire Washer Width (C1)	0.031
Total Length (B)	2.780
Stud Length (B1)	1.750
Threads (G) - 3/4-16 UNF	3/416 UNF
Thread Length (G1)	0.875
Weight (g)	419.00
Material - Stud and Roller head: Hardened carbon steel alloy, Needle rollers	52100 Chrome steel or equivalent

CF30 Bearing 2D drawings and 3D CAD models